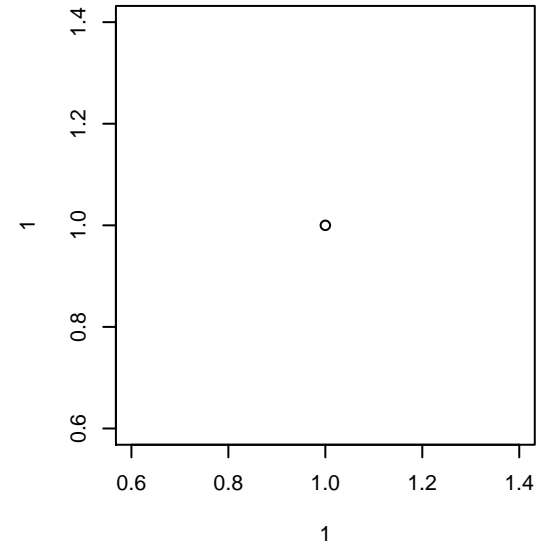


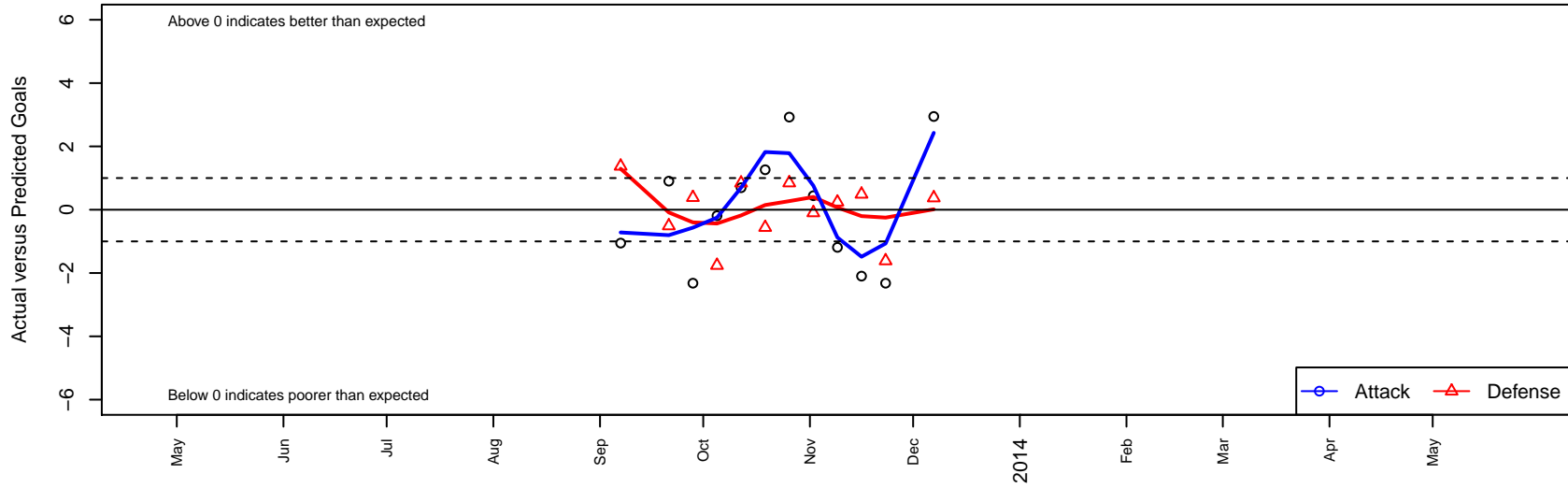
Silver Lake SC Blueberries G01

Silver Lake SC
 Silver Lake, WA
 G01 total strength=299
 attack=0.22 defense=0.14
 fall league = NPSL G12D3
 alt names used:
 SLSC Blueberries G01
 SLSC Blueberries
 SLSC Blueberries

Venues played:
 NPSL G12D3



Silver Lake SC Blueberries G01
 Dots are actual minus expected GF (blue circles) and GA (red triangles).
 Blue line is smoothed change in attack strength. Red is smoothed change in defense strength.



	date	home		away		venue	pred.home	pred.away
6821	2013-12-07	Granite Falls Thunderbirds G01	1	Silver Lake SC Blueberries G01	4	NPSL G12D3	1.37	1.05
6678	2013-11-23	MIFC Grizzlies G01	2	Silver Lake SC Blueberries G01	3	NPSL G12D3	0.38	5.32
6588	2013-11-16	Silver Lake SC Blueberries G01	0	Silver Lake SC Panthers G01	0	NPSL G12D3	2.10	0.49
6485	2013-11-09	Silver Lake SC Blueberries G01	0	Storm King G01	2	NPSL G12D3	1.19	2.24
6345	2013-11-02	Newport FC Predators-Galaxy G01	1	Silver Lake SC Blueberries G01	3	NPSL G12D3	0.90	2.56
6188	2013-10-26	Silver Lake SC Blueberries G01	5	BYSC Select Cambell G01	0	NPSL G12D3	2.07	0.85
6027	2013-10-19	Silver Lake SC Blueberries G01	3	Mukilteo Rush G01	2	NPSL G12D3	1.74	1.44
5868	2013-10-12	Seattle United W White G01	0	Silver Lake SC Blueberries G01	3	NPSL G12D3	0.84	2.30
5683	2013-10-05	Storm King G01	4	Silver Lake SC Blueberries G01	1	NPSL G12D3	2.24	1.19
5513	2013-09-28	Silver Lake SC Blueberries G01	3	MIFC Grizzlies G01	0	NPSL G12D3	5.32	0.38
5376	2013-09-21	Silver Lake SC Panthers G01	1	Silver Lake SC Blueberries G01	3	NPSL G12D3	0.49	2.10
5055	2013-09-07	Silver Lake SC Blueberries G01	0	Granite Falls Thunderbirds G01	0	NPSL G12D3	1.05	1.37